



ABOUT CARLY RAILCAR COMPONENTS, LLC:

Carly Railcar Components, LLC has been in business since 1995. It's owner, Larry Carly, has been involved in the rail industry since 1977. He is knowledgeable in all areas of car repair, with an extensive knowledge in airbrakes.

We provide material from AAR M1003 approved vendors, supplying to the smallest of mini and mobile shops up to the larger contract and plant facilities.

We have 2 warehouse facilities: Orange, TX and Irwin, PA.

Our sales representative, Greg Koechel, is an industry leader in knowledge of railcar repair material. He will be able to assist with any of your railcar material needs.

We strive to ship all in-stock orders within 24 hours.

We accept Visa and Mastercard. We can ship and invoice your material and have you a receipt within 48 hours.

Thank you for your interest in our company. For additional information, please visit our website: www.carlyrailcar.com.

Regards,

Deborah Carly

Deborah Carly / 409.330.4113

Director of Operations

Greg Koechel

Greg Koechel / 713.673.9614

PR Rep / Marketing

Email Purchase orders to: orders@carlyrailcar.com



At Carly Railcar Components our #1 goal is customer service!

As a supplier in the railcar industry we have over 100 years of combined experience between all our employees from warehouse experience, office personal experience and sales experience and much more.

We have competitive pricing that is right in line with the railcar industry and we have two locations to ship from either our Orange, TX or Irwin, PA facility.

There are many supply companies out there in the railcar industry therefore it is always good to have another source for your railcar parts.

Carly Railcar Components has been in the railcar industry for over 25 years and all we ask of you is give us a chance to quote your railcar parts.

We will let you know pricing and availability on every quotation you send us so why not give us a opportunity to quote your railcar parts!

Email Purchase orders to: orders@carlyrailcar.com

Greg Koechel

PR Rep / Marketing

713-456-9614

greg.koechel@carlyrailcar.com

Debbie Carly

Director of Operations

409-330-4113

debbie.carly@carlyrailcar.com

PARTS LIST

INDEX

- PAGE 1. BRAKE BEAMS, BRAKE SHOES, SLACK
ADJUSTERS, BRAKE RODS, BRAKE LEVERS, HAND
BRAKES**
- PAGE 2. E AND F TYPE COUPLERS, LOCKLIFTS,
THROWERS, LOCKS, DRAFT KEYS, YOKES, DRAFT
GEARS, METAL WEAR PLATES, CAMCAR BOLTS**
- PAGE 3. AIRBRAKE VALVES, VENT VALVES, GASKETS,
TRUCK AND BODY MOUNTED BRAKE
CYLINDERS, ANGLE COCKS, DIRT COLLECTORS,
BRANCH PIPE TEES**
- PAGE 4. TRAINLINE HOSES, GASKETS,
SUPPORTS, FITTINGS, TRUCK SPRINGS, SIDE
SPRINGS, FRICTION CASTINGS, PEDESTAL
ADAPTERS, CONSTANT CONTACTS**
- PAGE 5. SOCKET WELD FITTING, RFP GASKETS, PACKING
CUPS, TEST FIXTURES, ACCESS PLATES, DECALS,
POLYMER WEAR LINERS AND BOWLS**

CARLY RAILCAR PART #**DESCRIPTION**

#18 L.H.	#18 LEFT HAND BRAKE BEAM
#18 R.H.	#18 RIGHT HAND BRAKE BEAM
#24 L.H.	#24 LEFT HAND BRAKE BEAM
#24 R.H.	#24 RIGHT HAND BRAKE BEAM
660396	TMX BRAKE BEAM, 14 DEGREE
B-3-A	B-3-A BRAKE BEAM, RECONDITIONED
WE5505	POLYMER BRAKE BEAM WEAR ELIMINATOR
UW116	METAL BRAKE BEAM WEAR ELIMINATOR
2" COMP	2" HI FRICTION COMPOSITION BRAKE SHOE
1 1/2 COMP	1.5" HI FRICTION COMPOSITION BRAKE SHOE
V674	2" RED TREADGUARD BRAKE SHOE
V672	1.5" RED TREADGUARD BRAKE SHOE
BRAKE SHOE KEY	BRAKE SHOE KEY
2500	UNIVERSAL 2500DJ SLACK ADJUSTER, GROUP R
2300	UNIVERSAL 2300DJ SLACK ADJUSTER, GROUP E
2000	ELLCON 2000DJ SLACK ADJUSTER, GROUP E/R
C1000	C1000DJ SLACK ADJUSTER, GROUP O
7100-26/26R	7100 SERIES ELLCON COMPRESSION SLACK ADJUSTER, GROUP N
85A	MODEL 85A UNIVERSAL COMPRESSION SLACK ADJUSTER, GROUP P
566255	LEFT HAND FULCRUM BRACKET
566256	RIGHT HAND FULCRUM BRACKET
* BOTTOM ROD	VARIOUS SIZES AND OFFSETS. SEE DIAGRAMS FOR HOW TO MEASURE
* BRAKE LEVER	VARIOUS SIZES AND BENDS. SEE DIAGRAMS ON HOW TO MEASURE
* BRAKE PINS	VARIOUS SIZES. SEE DIAGRAM ON HOW TO MEASURE
20161	CABLE TYPE BOTTOM ROD SUPPORT
HAND L	GROUP N LONG RELEASE HAND BRAKE 9300-3
HAND S	GROUP N SHORT RELEASE HAND BRAKE 9300
4493-3	GROUP O LONG RELEASE HAND BRAKE
4493	GROUP O SHORT RELEASE HAND BRAKE
35000-3	GROUP P LONG RELEASE HAND BRAKE
WHEEL	SHALLOW HAND BRAKE WHEEL
1153D	DEEP DISH HAND BRAKE WHEEL
655	HAND BRAKE CLEVIS
656	HAND BRAKE RIVOT
BELL CRANK	1966 BELL CRANK
SHEAVE	SHEAVE WHEEL
57306022	HAND BRAKE SPRING
1/2" QUICK	1/2" QUICK LINK/HAMMERLOCK
3/8" QUICK	3/8" QUICK LINK /HAMMERLOCK
X293	3/8" HAMMERLOCK,RIVOT,WASHER NUT FOR GROUP O CHAIN

CARLY RAILCAR PART #**DESCRIPTION**

SE60	SE60 RECONDITIONED COUPLER
SBE60	SBE60 RECONDITIONED COUPLER
SBE67R	SBE67 RECONDITIONED COUPLER
SBE67N	SBE67 COUPLER, NEW
E30	E30 KNUCKLE THROWER
E24B	E24B LOCKLIFT
E42	E42 LOCK
E50	E50 COUPLER KNUCKLE
C10	C10 KNUCKLE PIN
6H687800	18" COUPLER DRAFT KEY
6H687801	17.5" COUPLER DRAFT KEY
57308014	SLOTTED DRAFT KEY RETAINER
50094157	KEEPER FOR SLOTTED DRAFT KEY RETAINER
57308013	STRAIGHT DRAFT KEY RETAINER
57308008	FOLD OVER CLIP STYLE DRAFT KEY RETAINER LOCK
Y44	Y44 E COUPLER FOLLOWER BLOCK
Y40	Y40 YOKE, RECONDITIONED, E COUPLER
SY40	SY40 YOKE, NEW, E COUPLER
WRWP1532	MANGANESE COUPLER CARRIER WEAR PLATE E TYPE COUPLER
51000106	POLYMER COUPLER CARRIER WEAR PLATE E TYPE COUPLER
SF70	SF70 RECONDITIONED COUPLER
F70	F70 COUPLER, NEW
F7	F7 ROTARY LOCKLIFT
F8A	F8A ROTOR SINGLE
F31	F31 KNUCKLE THROWER
F41	F41 LOCK
F51	F51 COUPLER KNUCKLE
Y47	Y47 F COUPLER PIN
Y46	Y46 F COUPLER FOLLOWER BLOCK
Y45	Y45 YOKE, RECONDTIONED, F COUPLER
MARK 50	MARK 50 DRAFT GEAR, RECONDITIONED
TF 880	TF 880 DRAFT GEAR, RECONDITIONED
MD113R	3/8" X 7 1/2" X 9 7/16" COLUMN GUIDE WEAR PLATE W/HOLES
MD135R	1/2" X 5 1/2" X 8 3/4" COLUMN GUIDE WEAR PLATE W/HOLES
788-74240-945	3/4" X 2 5/8" CAMCAR BOLT, COUNTER SUNK HEAD
788-74090-945	3/4" X 2 3/8" CAMCAR BOLT, COUNTER SUNK HEAD
788-74110-000	3/4" CAMCAR NUT
784-20156-160	7/8" X 4" CAMCAR BOLT, COUNTER SUNK HEAD
784-20156-140	7/8" X 3.5" CAMCAR BOLT, COUNTER SUNK HEAD
754-000-031	7/8" CAMCAR NUT
50092519	PLACARD HOLDER
ROUTE CARD	ROUTE CARD HOLDER

CARLY RAILCAR PART #**DESCRIPTION**

ABD	ABD EMERGENCY VALVE, RECONDITIONED
ABD-S	ABD SERVICE VALVE, RECONDITIONED
ABDW	ABDW EMERGENCY VALVE, RECONDITIONED
ABDX-E	ABDX EMERGENCY VALVE, RECONDITIONED
ABDX-S	ABDX SERVICE VALVE, RECONDITIONED
DB10	DB10 SERVICE VALVE, RECONDITIONED
DB20	DB20 EMERGENCY VALVE, RECONDITIONED
AB PIPE	AB PIPE BRACKET/BLOCK, RECONDITIONED
994783	EMERGENCY VALVE GASKET
994784	SERVICE VALVE GASKET
569146	AB PIPE BRACKET FILTER
512708	RELEASE ROD HANDLE (CROW'S FOOT)
569669	STEM PROTECTOR, PLASTIC, WHITE
94947	PIPE BRACKET FILTER CAP
502574	AB VENT PROTECTOR
748708	# 8 VENT PROTECTOR
#8 VENT VALVE	#8 VENT VALVE, RECONDITIONED
KM2	KM2 VENT VALVE, RECONDITIONED
VX VENT	VX VENT VALVE, RECONDITIONED
5/8" X 12 BOLT	5/8" X 12" PIPE BRACKET MOUNTING BOLT
584253	5/8" X 3" STUD
561218	5/8" X 6 5/8" STUD
570634	5/8" X 7 1/8" STUD
81370	5/8" X 7 3/8" STUD
10" HOLLOW	10" BRAKE CYLINDER, PISTON ONLY, RECONDITION
10" X 12" CYL	10" X 12" BRAKE CYLINDER, COMPLETE, RECONDITIONED
8.5" HOLLOW	8.5" BRAKE CYLINDER, PISTON ONLY, RECONDITIONED
8.5" X 12" CYL	8.5" X 12" BRAKE CYLINDER, COMPLETE, RECONDITIONED
WABCO HOLLOW	8.5" WABCO PAC, PISTON ONLY, RECONDITIONED
WABCO PAC	8.5" WABCO PAC, COMPLETE, RECONDITIONED
660999	ANGLE COCK, NEW
577071	DIRT COLLECTOR/CUTOUT COCK, NEW
775661	3 POSITION RETAINER, NEW
581828	BRAKE PIPE END COCK, R.H.
581829	BRAKE PIPE END COCK, L.H.
BPT20-16	1 1/4" FLANGED BRANCH PIPE TEE
BPT20-16-45	1 1/4" BRANCH PIPE TEE 45 DEGREE
BPT20-16-90	1 1/4" BRANCH PIPE TEE 90 DEGREE

CARLY RAILCAR PART #	DESCRIPTION
987101	TRAINLINE HOSE 22" STANDARD SHANK
587560	TRAINLINE HOSE 33" STANDARD SHANK
S601500	TRAINLINE HOSE 22" STRAIGHT SHANK
578219	BRAKE CYLINDER HOSE, 3/4" X 28" SWIVEL TO SWIVEL
661019	BRAKE CYLINDER HOSE, 3/4" X 28" FLANGE TO SWIVEL
S2751435	AIR DOOR DUMP HOSE, 1" LP415E 15 DEGREE GLAD HAND, 1 1/8" ID, 37.44" OAL
563952	GLAD HAND/TRAINLINE HOSE GASKET
20406	CABLE TYPE TRAINLINE HOSE SUPPORT, WITH SLEEVE
2457	CHAIN TYPE TRAINLINE HOSE SUPPORT
2485	RUBBER TYPE TRAINLINE HOSE SUPPORT, PENNSY
EHS	RUBBER TYPE TRAINLINE HOSE SUPPORT, STRATO
1986-2	BOLT ON TYPE TRAINLINE HOSE SUPPORT
587087	TRAINLINE HOSE EXTENSION
ROOF	ROOF LINERS 70-100 TON SNAP ON
* SPRINGS	D-3 INNER & D-3 OUTER D-5 INNER & D-5 OUTER D-6 INNER & D-6A INNER D-7 INNER & D-7 OUTER B353 & B354 B421 & B422 B432 & B433 3092 & 3092
* FRICTION CASTINGS	787C 609D 834C 888LG-N 913LG-N 17803 RFE16 RFE18
* PEDESTAL ADAPTERS	6.5" X 12" NARROW 6" X 11" NARROW 6.5" X 9" NARROW 6.5" X 9" ADAPTER PLUS 10454 BLUE PADS 10601 GREEN PADS
RETROXT 5400B	RETRO FIT KIT FOR EXTENDED TRAVEL. FOR 688B CAGES
RETROXT 5400C	RETRO FIT KIT FOR EXTENDED TRAVEL. FOR 656C CAGES
TCC IV 60LT	CCSB, LONG TRAVEL, 6000# PRELOAD BLUE
TCC III 80LT	CCSB, LONG TRAVEL, 8000# PRELOAD
TCC 45-LTR	CCSB, LONG TRAVEL, 4500# PRELOAD, RETROFIT 688B CAGE DROP IN
TCC 60-LTR	CCSB, LONG TRAVEL, 6000# PRELOAD, RETROFIT 688B CAGE DROP IN
TCC LTLP	CCSB, LONG TRAVEL, LOW PROFILE 4500# PRELOAD, RETROFIT EXISTING BLOCK
TCC LTLP-C	CCSB, LONG TRAVEL, LOW PROFILE 4500# PRELOAD, BOLT ON
TCC LTLR-B	CCSB, LONG TRAVEL, LOW PROFILE 4500# PRELOAD, RETROFIT EXISTING WELD /CAST IN

CARLY RAILCAR PART #	DESCRIPTION
SB6	3/8" S.W. FITTING
SB12	3/4" S.W. FITTING
SB16	1" S.W. FITTING
SB20	1 1/4" S.W. FITTING
SBD6	3/8" DEEP S.W. FITTING
SBD12	3/4" DEEP S.W. FITTING
SBD16	1" DEEP S.W. FITTING
SBD20	1 1/4" DEEP S.W. FITTING
SFS6	3/8" SPLIT FLANGE
SFS12	3/4" SPLIT FLANGE
SFS16	1" SPLIT FLANGE
SFS20	1 1/4" SPLIT FLANGE
SWD12	3/4" DEEP S.W. UNION
SWD16	1" DEEP S.W. UNION
SWD20	1 1/4" DEEP S.W. UNION
SWS6	3/8" S.W. UNION
SWS12	3/4" S.W. UNION
SWS16	1" S.W. UNION
SWS20	1 1/4" S.W. UNION
93839	3/8" RFP GASKET
93840	1/2" RFP GASKET
93841	3/4" RFP GASKET
93986	1" RFP GASKET
94790	1 1/4" RFP GASKET
75932	DIRT COLLECTOR BOWL GASKET
574952	3 POSITION RETAINER GASKET
666228	8.5" PACKING CUP
506957	9" PACKING CUP
666229	10" PACKING CUP
506957	11" PACKING CUP
QD4-100	MALE PRESSURE TAP WITH CAP
WFA	WAFER FLANGE
CMRTF322	CYLINDER MAINTAINING RETAINING TEST FIXTURE
660719-F001	TOP ACCESS PLATE WITH FITTING
660719-F002	TOP ACCESS PLATE 90DEGREE WITH FITTING
660720-F000	FRONT ACCESS PLATE WITH FITTING
664535	ACCESS PLATE RUBBER KIT
R99	REFLEXTITE CONSPICUITY STRIPS 4" X 18"
HOME SHOP	HOME SHOP DECALS
MCA50RR	CHEMTREC/CANUTEC 3 DECAL, AAR FOR RAILROAD
6K22701	DOUBLE TAPER CENTER PIN 1 3/4" X 15"
LUBE DISC	LUBE DISCS LB270 SOLD IN BOX OF 100 PCS
WE1014XLS	14" HOLLUBE WEAR ELIMINATOR, W/O RIVETS, ZEFTEK
WE1016XLS	16" HOLLUBE WEAR ELIMINATOR, W/O RIVETS ZT371, ZEFTEK
WE2416J	16" CENTER BOWL WEAR ELIMINATOR, WITH RIVETS, 2" *ZT350 , ZEFTEK
WE2016J	CENTER BOWL WEAR LINER, 2" BOWL DEPTH ZT380



email PO's to: orders@carlyrailcar.com

Products at Carly Railcar Components

E COUPLERS AND COMPONENTS

F COUPLERS AND COMPONENTS

TRUCK COMPONENTS

HANDBRAKES

BRAKE SHOES AND BRAKE BEAMS

SLACK ADJUSTERS

AIR BRAKE PARTS

AIR HOSES

WEAR ELIMINATORS

UNCOUPLING LEVERS

MISCELLANEOUS PARTS

- Listed are the most commonly supplied items. If you need a part you do not see, please give us a call and we can confirm inventory

E COUPLERS AND COMPONENTS

- Couplers – E60, SBE60, SE60. SBE67, E69
- E type knuckles
- E type lock lift, thrower, and lock
- Y44 follower block
- Draft gears
- Draft keys
- C-10 pins
- Retainer and loc



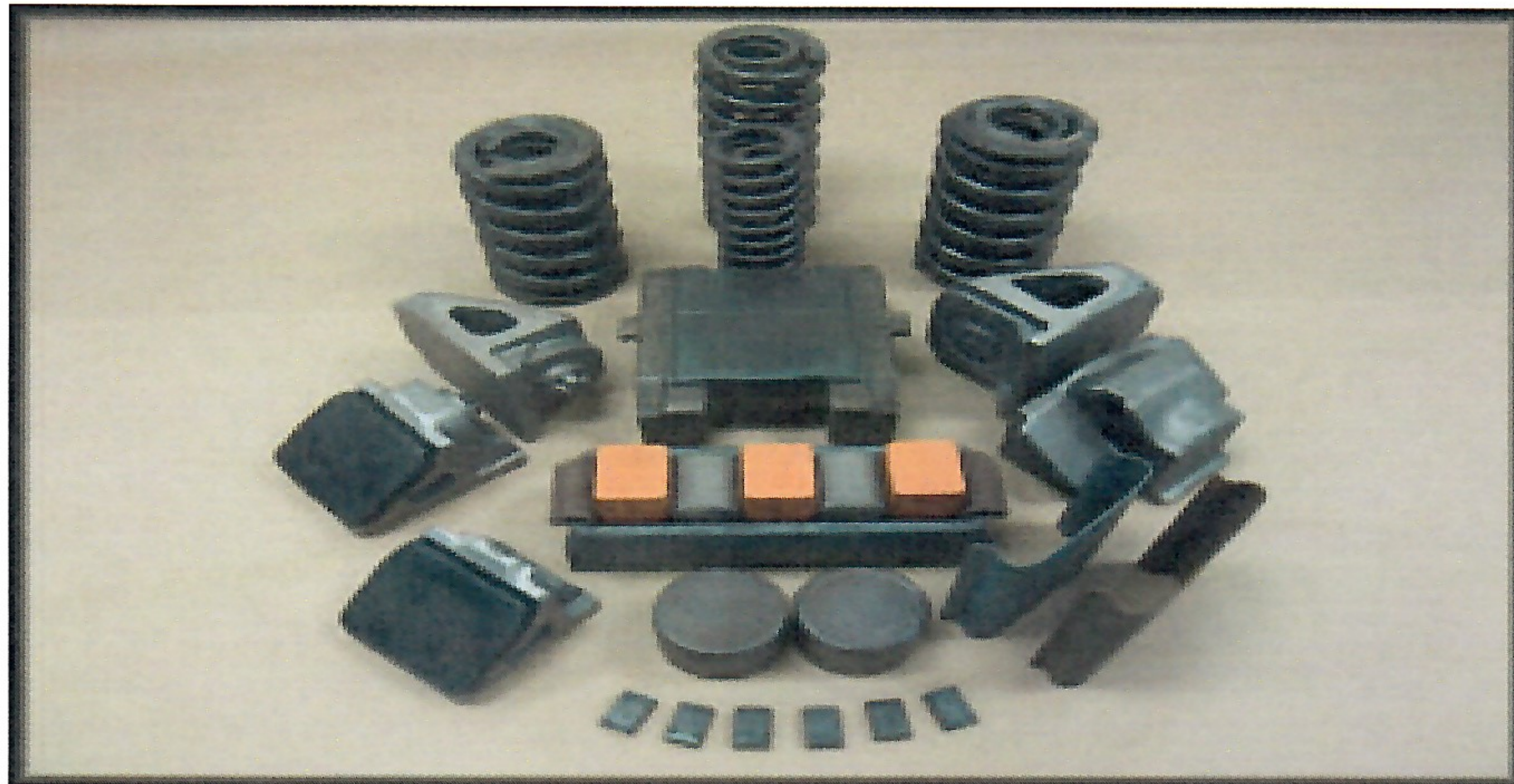
F COUPLERS AND COMPONENTS

- Couplers – SF70, F70
- Y45 yokes
- Y46 follower block
- F type throwers, lock lift, lock – including rotary type
- F type knuckle
- C-10 pin
- Y47 pin



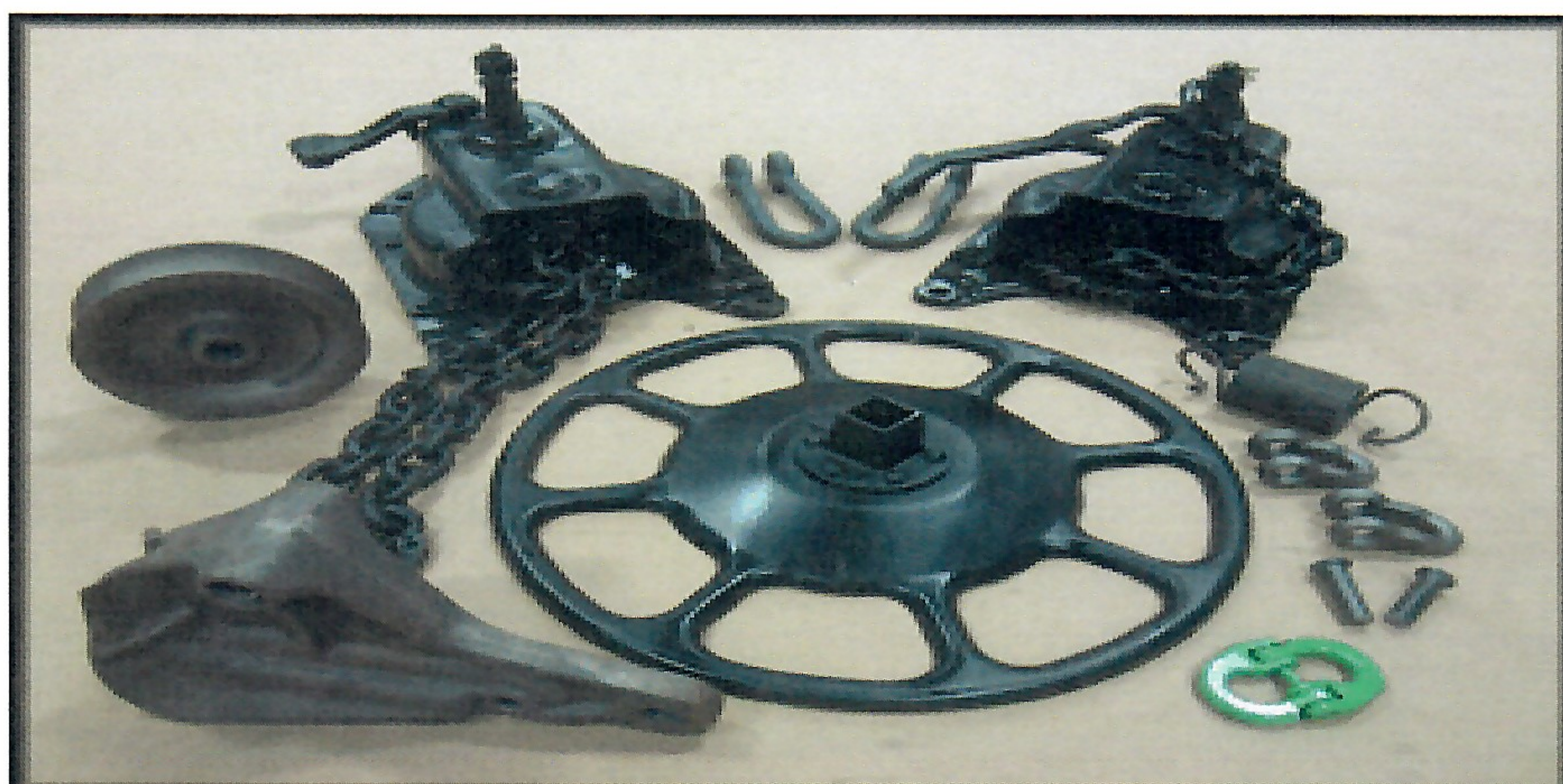
TRUCK COMPONENTS

- Springs, Inner and Outer – D3, D5, D6, D7. B421, B422, B353, B354
- Friction castings – 17803, 609D, 787C, 888LG-N, 913LG-N, 834
- Pedestal adapters – 6 ½ x 12, 6 x 11, 6 ½ x 9 Narrow, 6-1/2 x 9 Adapter Plus
- Roof liners 70 – 100 ton clip on,
- Roof liner stops
- Stucki cages
- Upgrade kits, rollers, blocks, constant contact assemblies



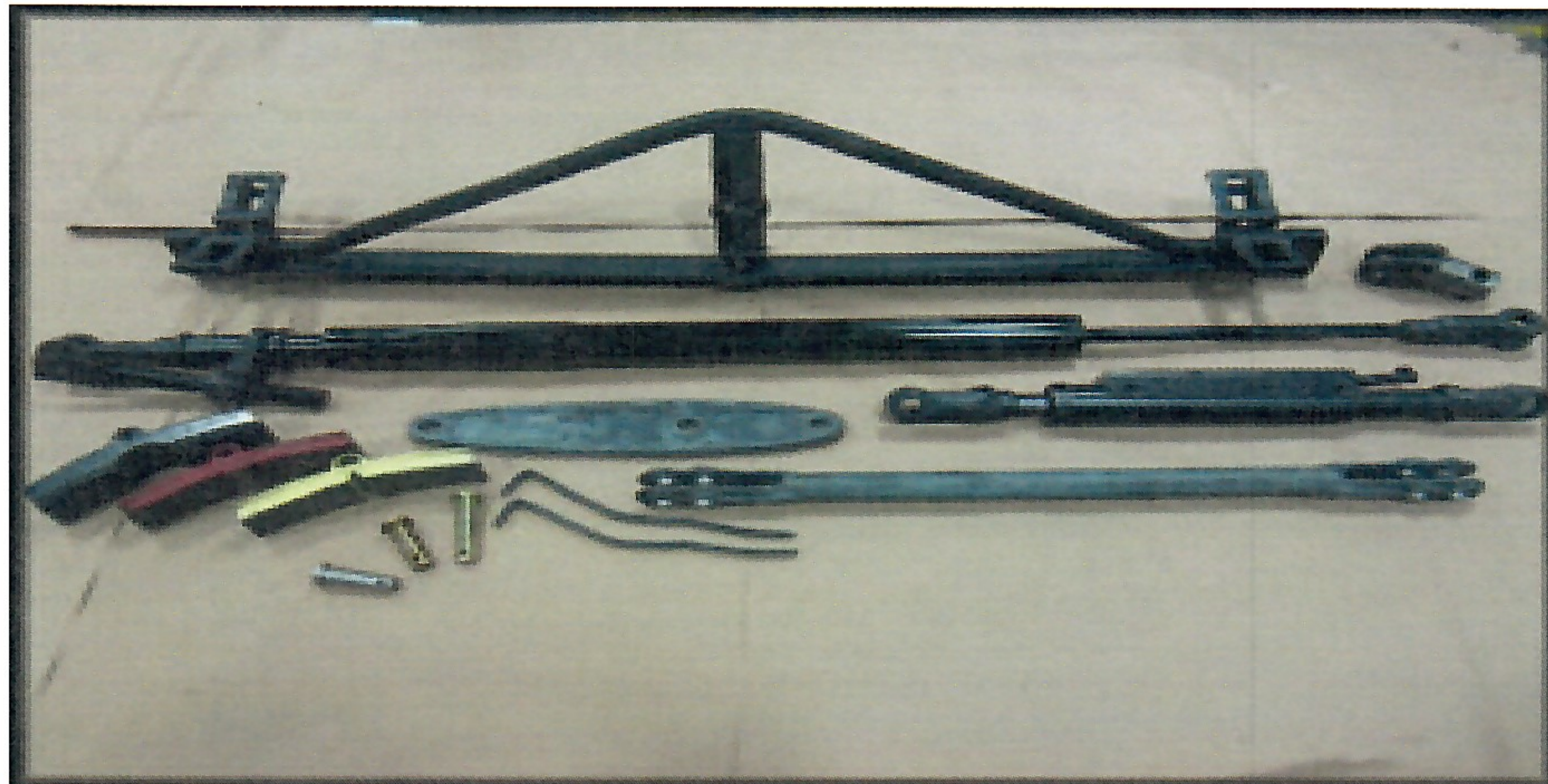
HANDBRAKE COMPONENTS

- Group N, Group O, Group P – long and short release
- Clevis and hot rivet
- Bell crank
- Sheave wheel
- Shallow dish wheel
- Quick Links
- Handbrake springs



BRAKE BEAMS, BRAKE SHOES, BRAKE LEVERS, BOTTOM RODS, ETC COMPONENTS

- #18 and #24 right and left hand
- B3A brake beams
- Brake shoes – 1 ½" and 2" composition, 1 ½" yellow low friction, 1 ½" and 2" red treadguard, locomotive shoes
- Brake shoe keys
- Universal 2500DJ, Ellcon Series 7100 Compression, Ellcon 2000DJ, TMX & UBX, C1000DJ
- Brake levers and fulcrums
- Brake pins
- Bottom rods



AIRBRAKE VALVES, ANGLE COCKS, CYLINDERS, GASKETS, ETC. COMPONENTS

- Airbrake valves – ABD Emergency and Service, ABDX Emergency and Service, ABDW Emergency, DB Emergency and Service
- Angle cocks and end cocks
- 3 position retainers and mounting brackets
- Dirt collector/cutout cocks
- AB and #8 vent protectors
- AB pipe bracket
- Airbrake cylinders – Wabco 7 ½, 8 ½, 9, 10" truck mounted. 8 ½ x 12", 10 x 12", 12 x 10". TMX 7, 8, 9". Ellcon 8500 series 7 ½, 8 ½". Thrall 36x. ABEX.
- Empty load devices



TRAINLINE HOSES, BRAKE CYLINDER HOSES, SUPPORT STRAPS, ETC. COMPONENTS

- Trainline – 22", 33" and 22" straight shank
- Intermediate
- Truck mounted brake cylinder
- Supports – nylon, cable, rubber, bolt on
- Hose gasket



CENTER BOWL LINERS (DOGGIE DISH), HORIZONTAL (FLAT) STEEL & PLASTIC LINERS, BRAKE BEAM STEEL & PLASTIC LINERS, PLASTIC COUPLER CARRIER WEAR PLATES, ETC. COMPONENTS

- Lube discs
- Steel and hollube center plate, 14" and 16"
- Center bowl "dog dish"
- Stainless verticle rings, 14" and 16"
- Steel and hollube e and f coupler carrier
- Steel and hollube brake beam



UNCOUPLING LEVER BRACKET SPACERS (FILLERS), LEVER BRACKETS ETC. COMPONENTS

- One piece
- Tac weld (EZ-SA)
- Yellow and blue telescopic
- Uncoupling lever brackets 10234



MISCELLANEOUS COMPONENTS

- Standard and deep socket weld fittings – 3/8" to 1 1/4"
- Socket weld unions
- Branch pipe tees
- Brake cylinder tap connection
- Rubber components - packing cups, gaskets, emergency and service portion gaskets
- Pipe bracket filters
- Pipe block studs, reservoir bolts, T-bolts
- Reflector yellow tape strips 4" x 18" / 100 pieces per pack
- Crows foot (handle release valve) goes on the service portion valve



BOTTOM RODS / CONNECTING RODS

Note: correct way to measure is inside to inside hole

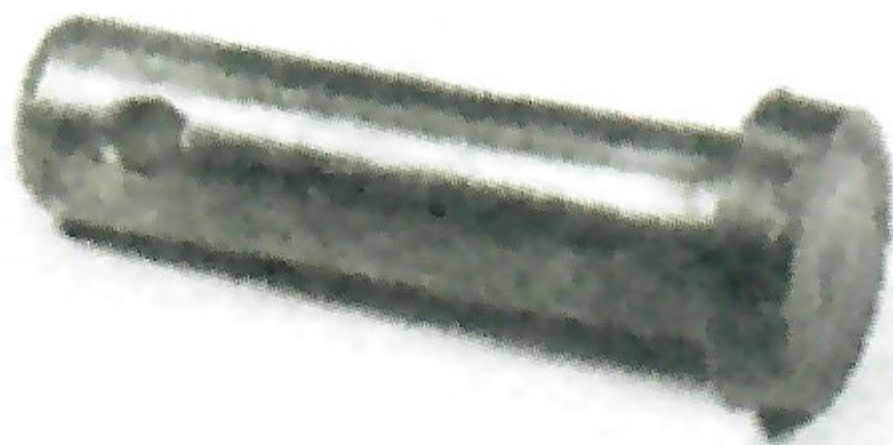
we carry straight, single & double offset



BRAKE PINS / LEVER PINS

Note: measure from under the pin head to center of hole for length & measure diameter

Brake pins come in variety of lengths



DRAFT KEYS / CROSS KEYS

Note: measure from under the draft key head to center of hole

draft keys come in variety of lengths

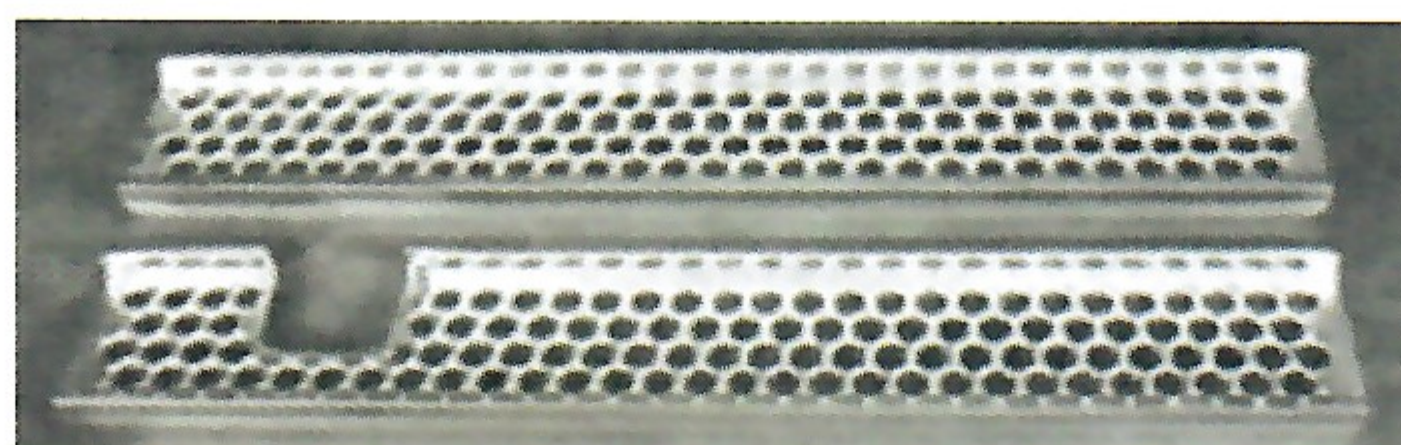


COTTER KEYS / COTTER PINS

Note: come in variety of sizes



END BOARDS / PLATFORMS 8" X 60" A & B END TYPE (ROUND HOLE)



HOME SHOP DECALS



CHEMTREC DECALS



RECONDITIONED WHEELS

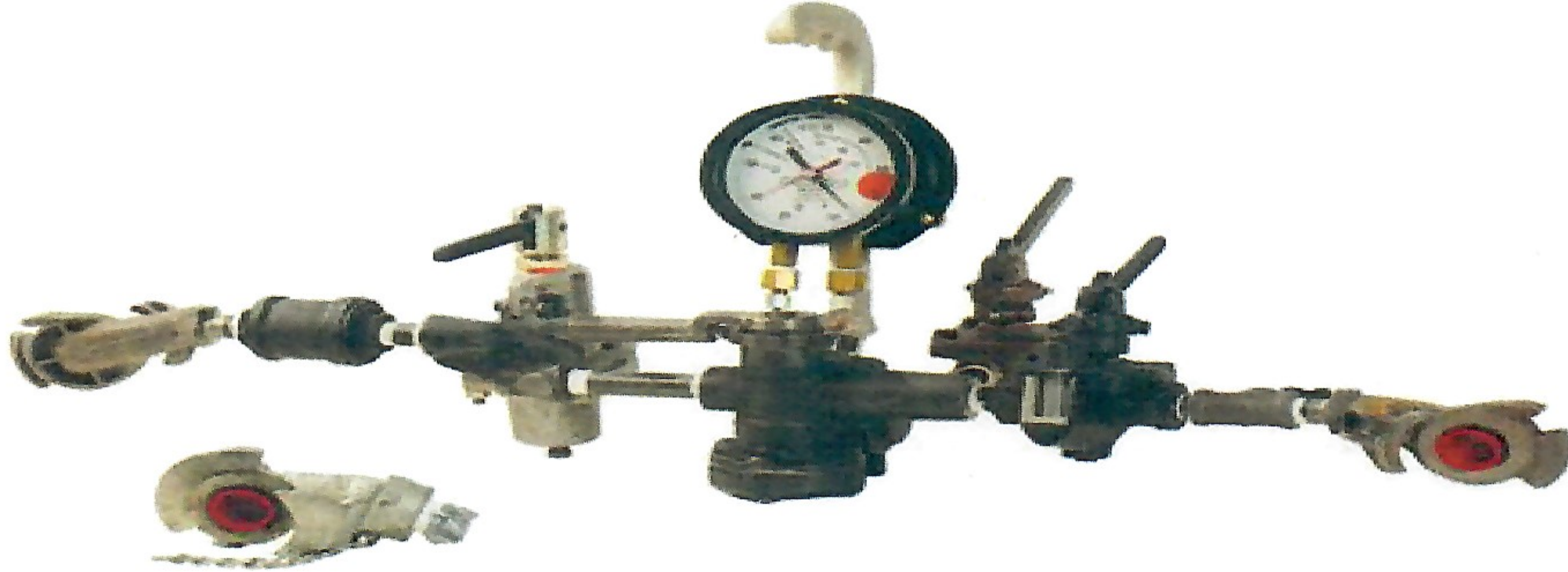
Note: you have to request what size you need



REBUILT SINGLE CAR TESTER DEVICE / SCTD

Rebuilt Single Car Tester Device complete with calibration certification papers

Note: have to call or email Debbie for current pricing



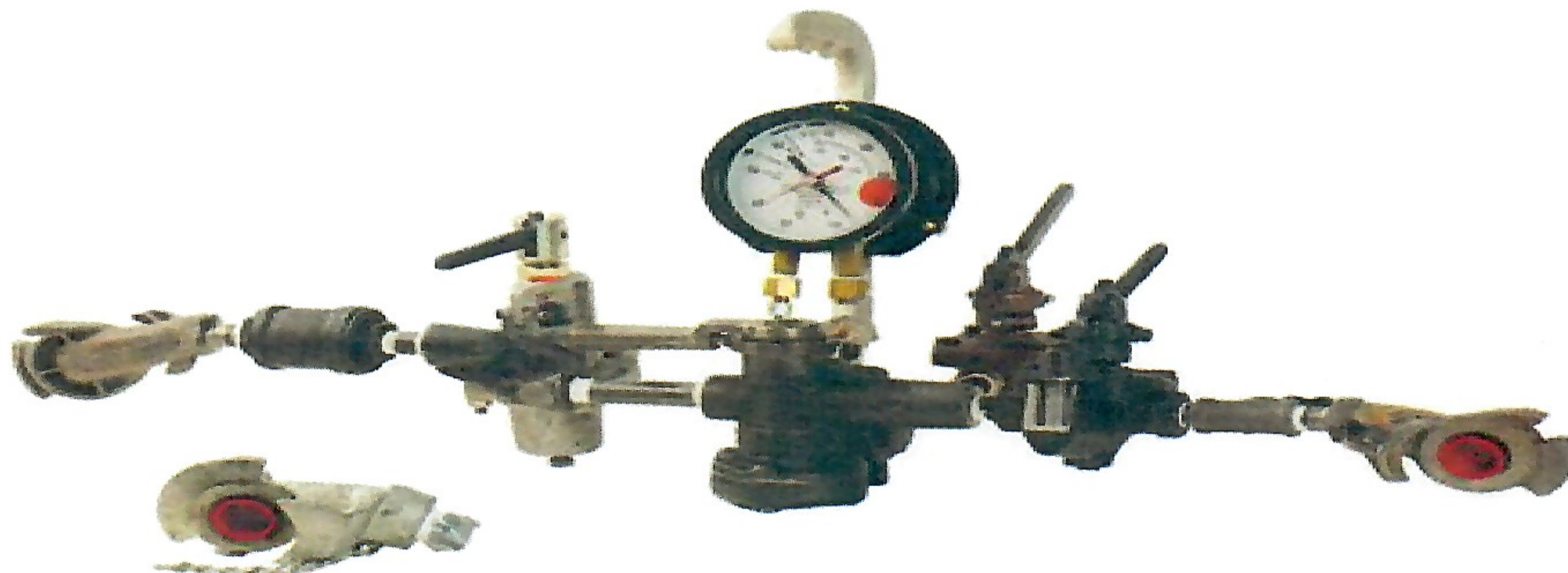
Includes:

- 1) Single Car Tester (re-built, calibrated)
- 2) Brake Cylinder Gage, calibrated
- 3) Daily test Choke, calibrated
- 4) Dummy Coupling
- 5) 5 ft. hose to use from SCT to Railcar

Note: All parts above not showed in picture

WE DO RE-CERTIFICATION ON SCTD

Note: have to call or email Debbie for current pricing



SINGLE CAR TESTER GAUGE



BRAKEMAN TEST GAUGE



GAUGE WITH HOSE & QUICK DISCONNECT



DUMMY COUPLING



BRAKE LEVERS

Note: measure from end hole to center hole each side & measure hole sizes



BRAKE ROD EYES AND JAWS

Note: you have to request what size you need

Eye

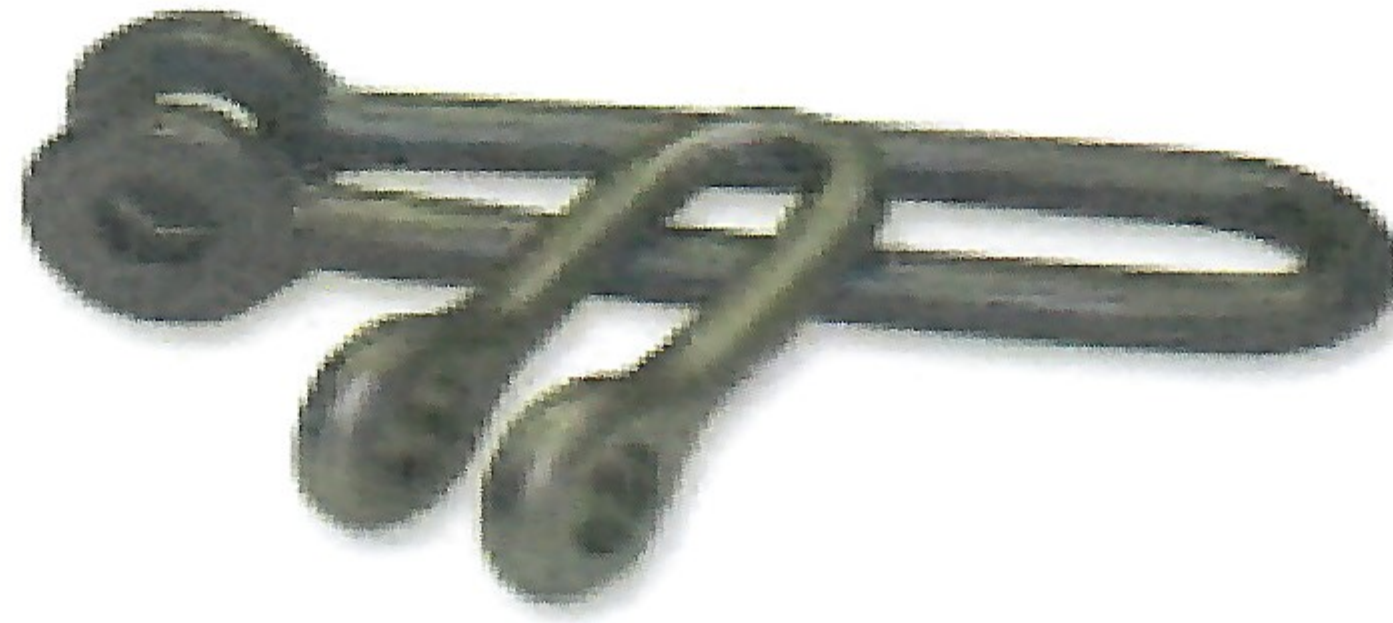


jaw



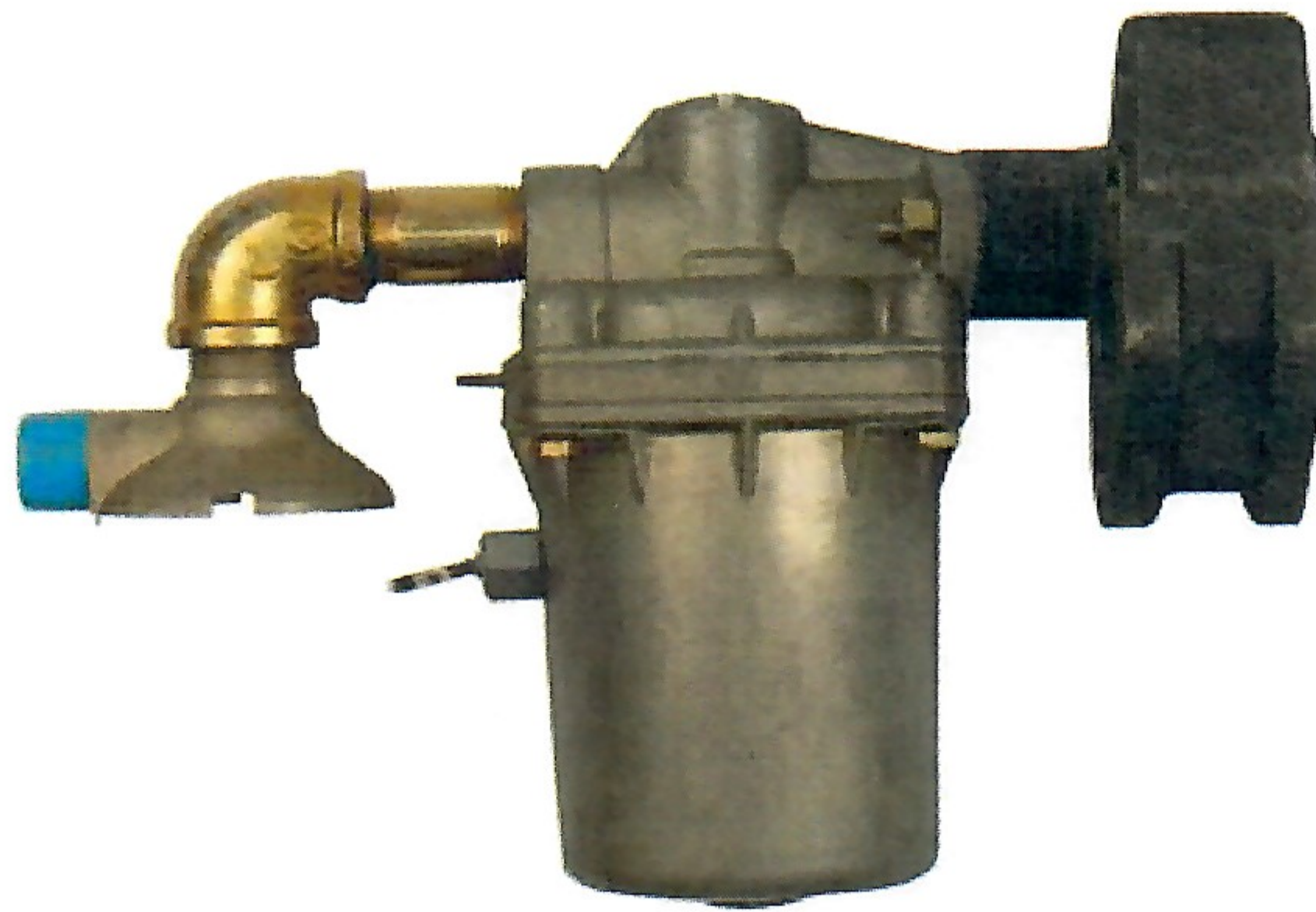
BRAKE ROD CLEVIS

Note: you have to request what size you need



#8 VENT VALVE & #8 VENT VALVE PROTECTOR

Note: has a branch pipe tee attached also



VX VENT VALVE

Note: up grade from #8 vent valve (this has a pull pressure release)



AB VENT VALVE PROTECTOR



BRANCH PIPE TEES

Note: there is a variety of sizes, types & styles



SLACK ADJUSTERS – Group R 2500, TMX & UBX C1000, Ellcon 8500



HANDBRAKES – GROUP N (single chain) & GROUP O (double chain)

Note: have to request long or short release handle



HANDBRAKE - GROUP O SHOCK RETARDER



HANDBRAKE – BELL CRANK



HANDBRAKE – SHEAVE WHEEL



HANDBRAKE SPRING



HANDBRAKE WHEEL





DIAGRAMS

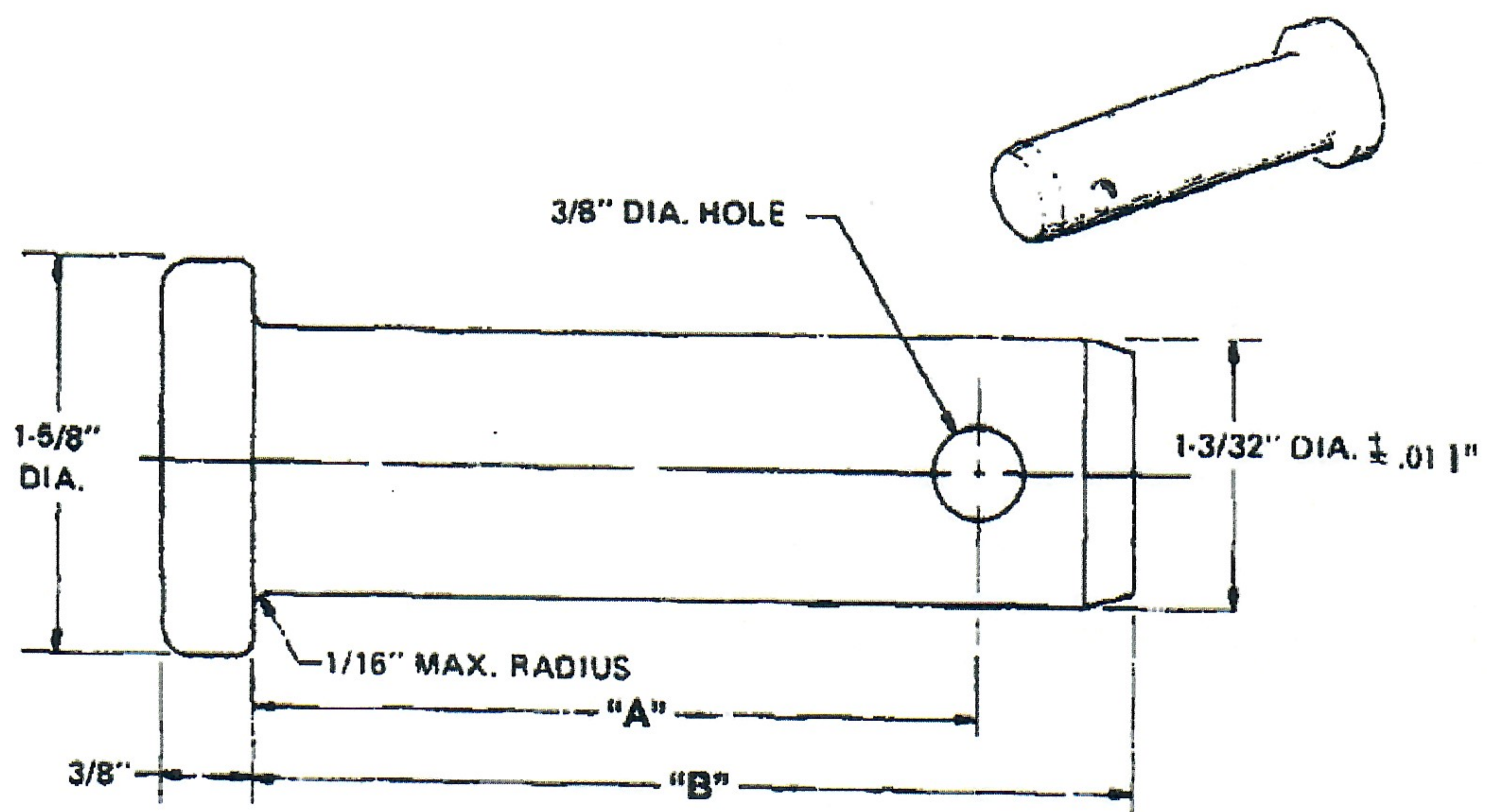
(make copies for shop personal to write on)

brake pins

grab irons / handhold

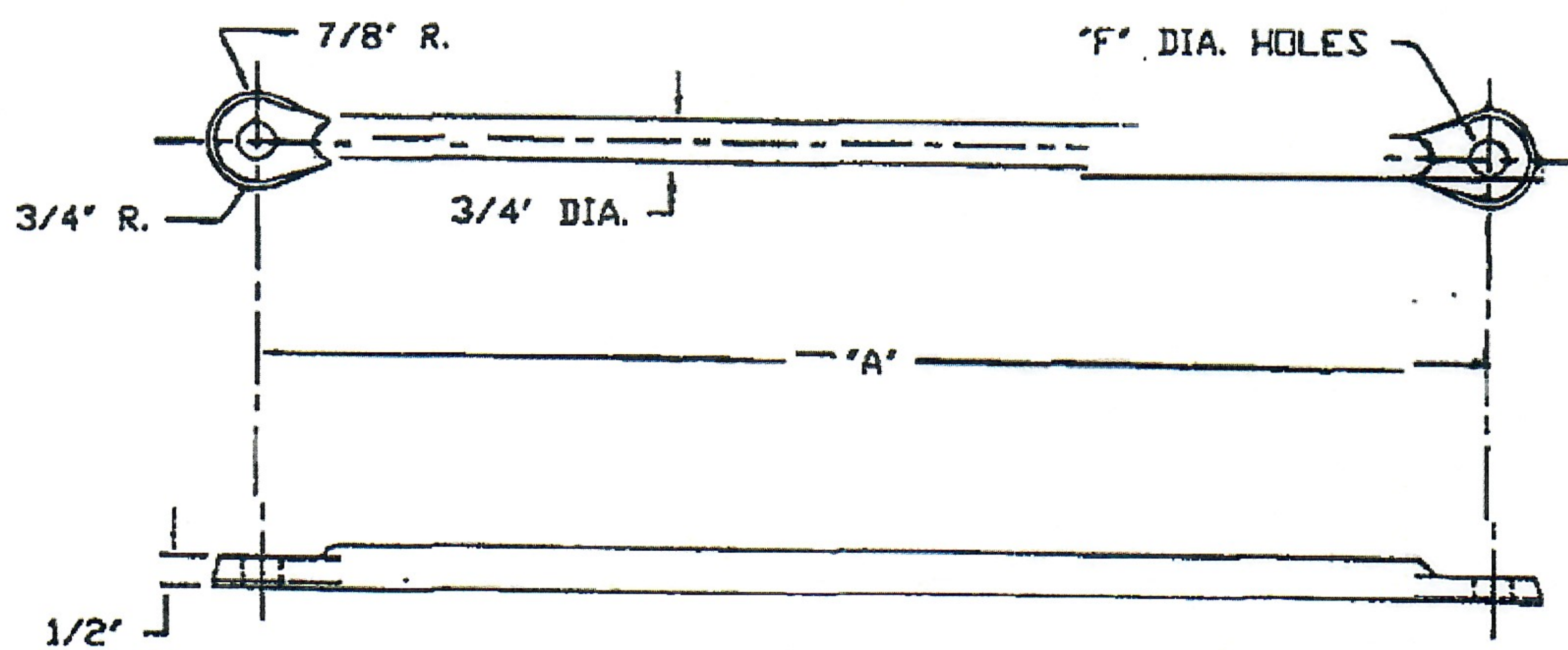
brake levers

connecting / bottom rod

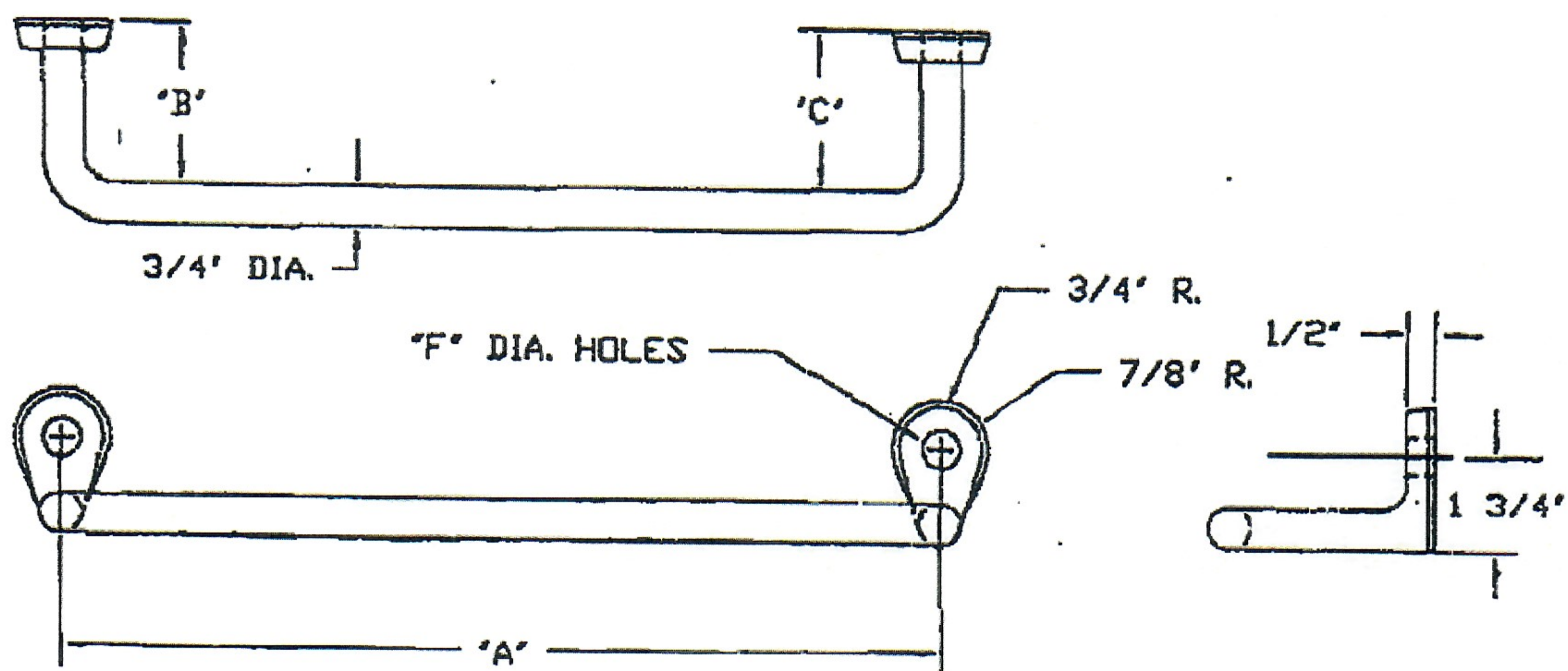


HOW TO MEASURE BRAKE PINS

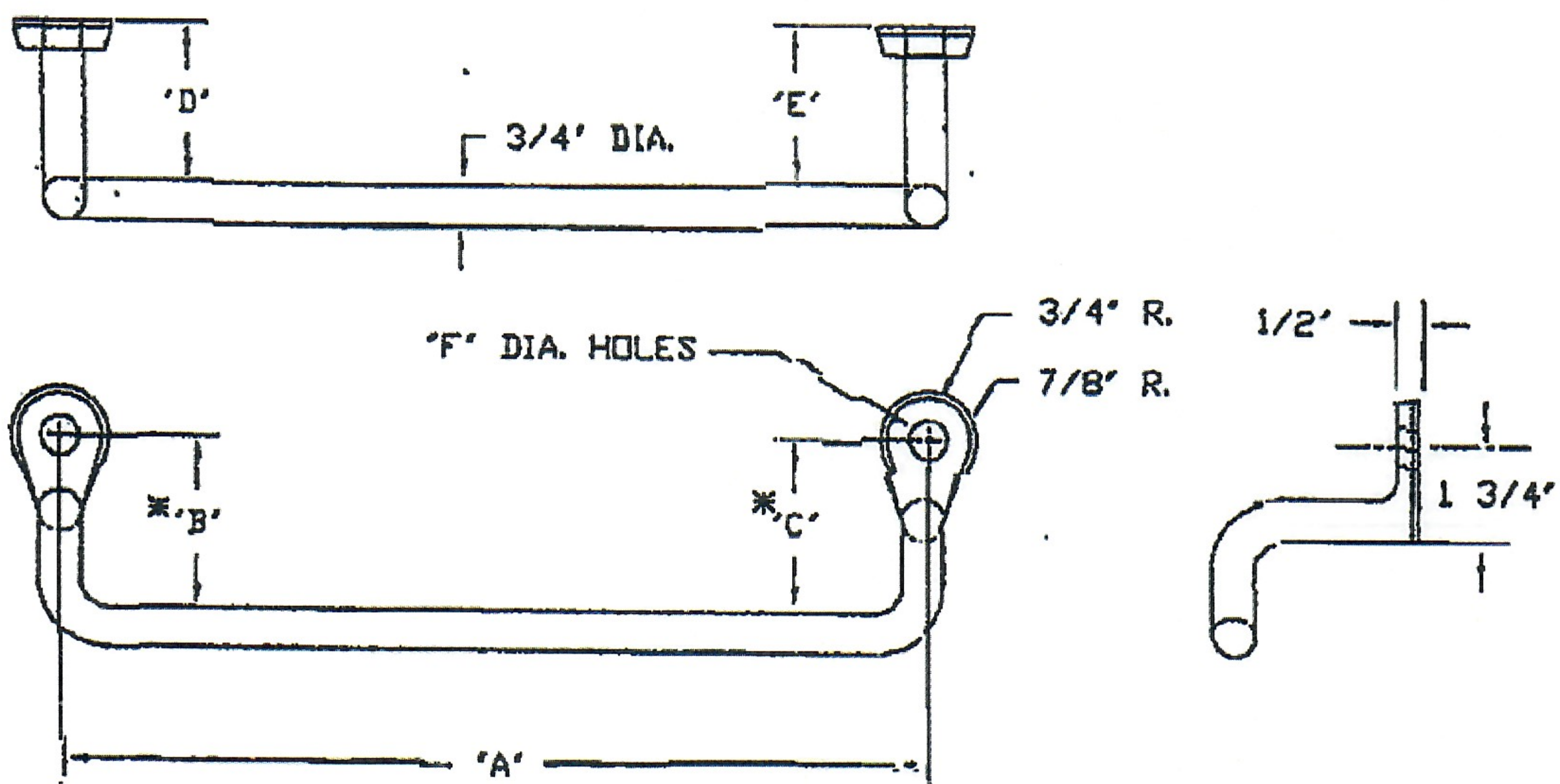
Straight Grab Iron

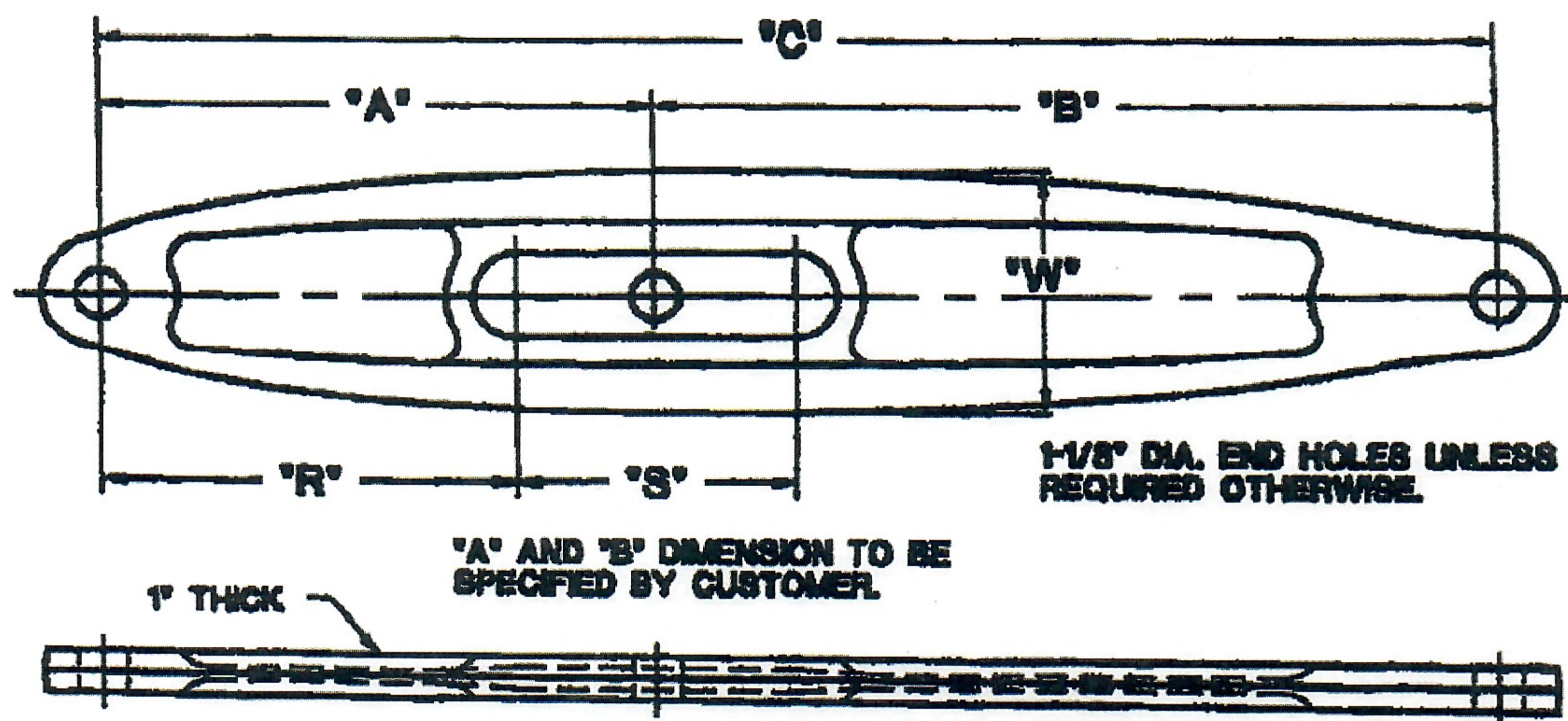


Single Offset Grab Iron



Double Offset Grab Iron





MATERIAL: STEEL, AISI NO. 1040/1045

DWG. NO	'C' (IN)	'W' (IN)	'R' (IN)	'S' (IN)
1062	10 - 12	4-1/4	3-1/2	2-1/2
1061	12 - 14	4-1/4	4	3
1060	14 - 16	4-3/8	4-1/2	3-1/2
1059	16 - 18	4-1/2	5	4
1058	18 - 20	4-5/8	5-1/2	4-1/2
1068	19-1/8 - 21	5-1/2	6	2-1/2
1067	20 - 22	4-3/4	6-1/2	4-1/2
2432	21-1/4 - 23	4-1/4	6-3/4	2-3/4
1066	20 - 23	4-3/4	4	4-1/2
1210	20 - 23	6	9	2-1/2
1056	22 - 24	4-7/8	7	6
997	23-3/4 - 24-1/2	4-3/4	6-1/4	2
1215	20-7/8 - 26-1/4	5-1/2	9-1/2	2-1/2
988	19 - 26	5-1/2	6	3
1065	23 - 26	5	5	5
1065	24 - 26	5	7-1/2	5-1/2
1064	26 - 28	5-1/4	8	6
1064	26 - 30	5-1/4	8	8

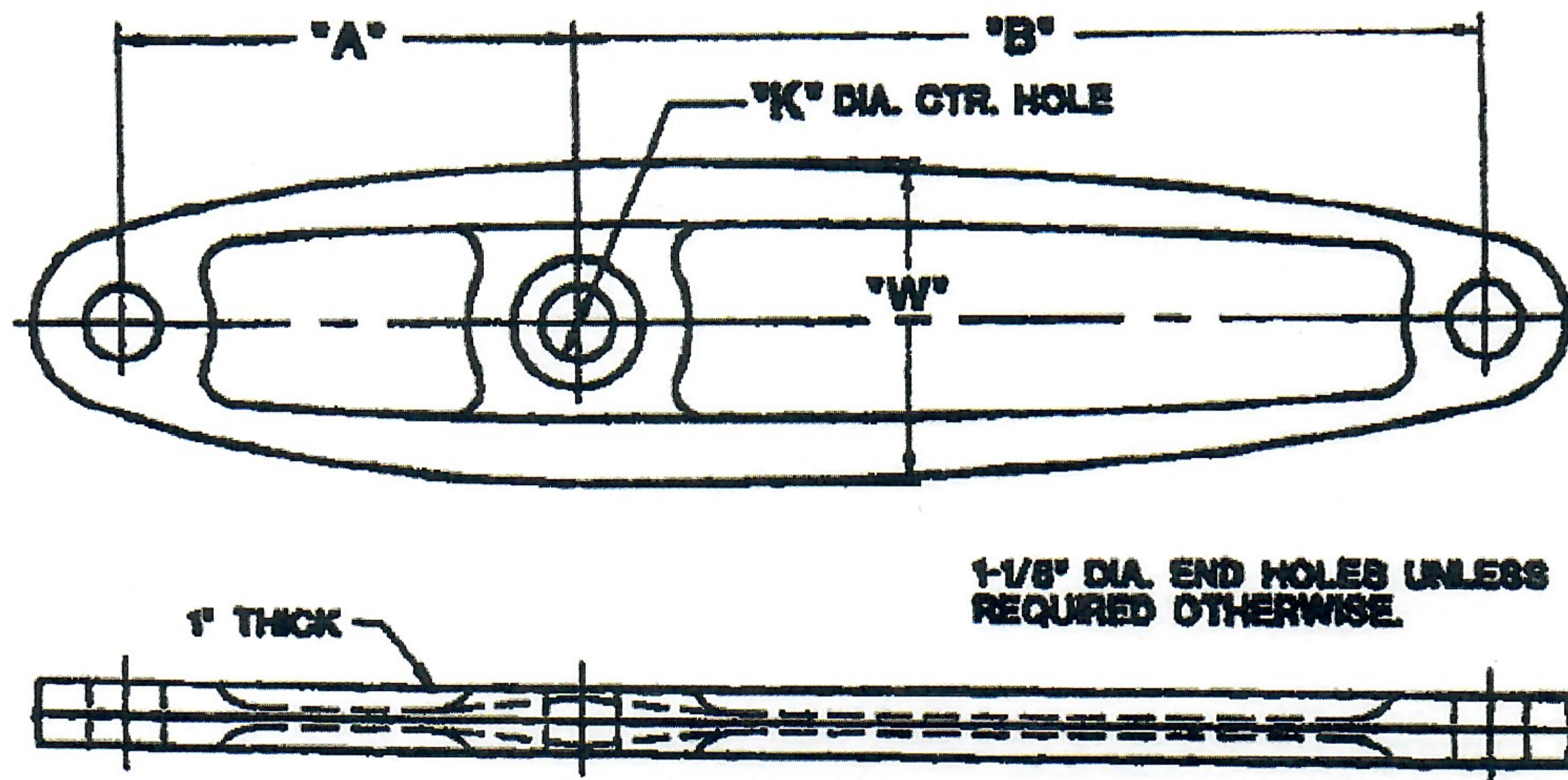
*

C

W

R

S

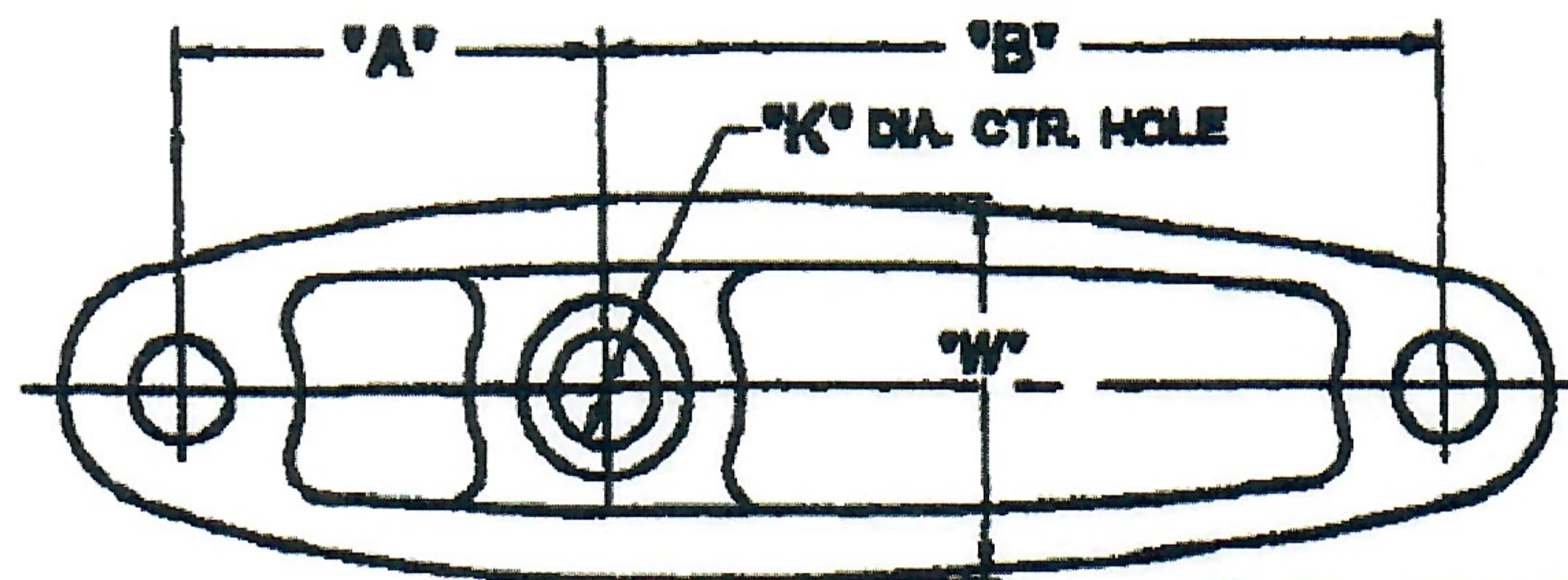


MATERIAL: STEEL, AISI NO.-1040/1045

DWG. NO	"A" (IN)	"B" (IN)	"W" (IN)	"K" (IN)	HEAT TREAT
1155	8	14	5	1-1/8	NO
1110	8	14	5	1-1/8	YES
1161	8	14	5-3/8	1-3/8	NO
1165	8	14	5-3/8	1-3/8	YES
908	8	18	5	1-1/8	NO
932	8	18	5	1-1/8	YES
1285	8	18	5-1/2	1-3/8	YES
6144	9	14	4-7/8	1-1/8	YES
954	8	18	4-3/4	1-1/8	NO
1011	7	14	5	1-1/8	YES
1108	5-3/4	8-5/8	5-1/4	SPECIFY	YES

*

A B W K



1-1/8" DIA. END HOLES UNLESS
REQUIRED OTHERWISE.



BENDS AT EITHER
END ARE AVAILABLE

MATERIAL: STEEL, AISI NO. 1040/1045, HEAT TREATED

DWG. NO	"A" (IN)	"B" (IN)	"W" (IN)	"K" (IN)	"D" (DEG.)
1049	6	10	4-3/8	1-1/8	8
1224	6	10	4-3/8	1-1/4	8
1234	6	10	4-3/4	1-3/8	8
1244	6	10	5-1/4	SPECIFY	8
1018	7	14	5	1-1/8	8
2584	7	14	5	1-1/8	12
1221	7	14	5	1-1/4	8
2585	7	14	5	1-1/4	12
1231	7	14	5-1/2	1-3/8	8
2422	7	14	5-1/2	1-3/8	12
1241	7	14	6-1/4	SPECIFY	8
2586	7	14	6-1/4	SPECIFY	12
1019	5-1/2	11	4-1/2	1-1/8	8
1220	7-1/2	15	5-3/4	1-1/4	8
1230	8	18	6-7/8	1-3/8	8

*

A

B

W

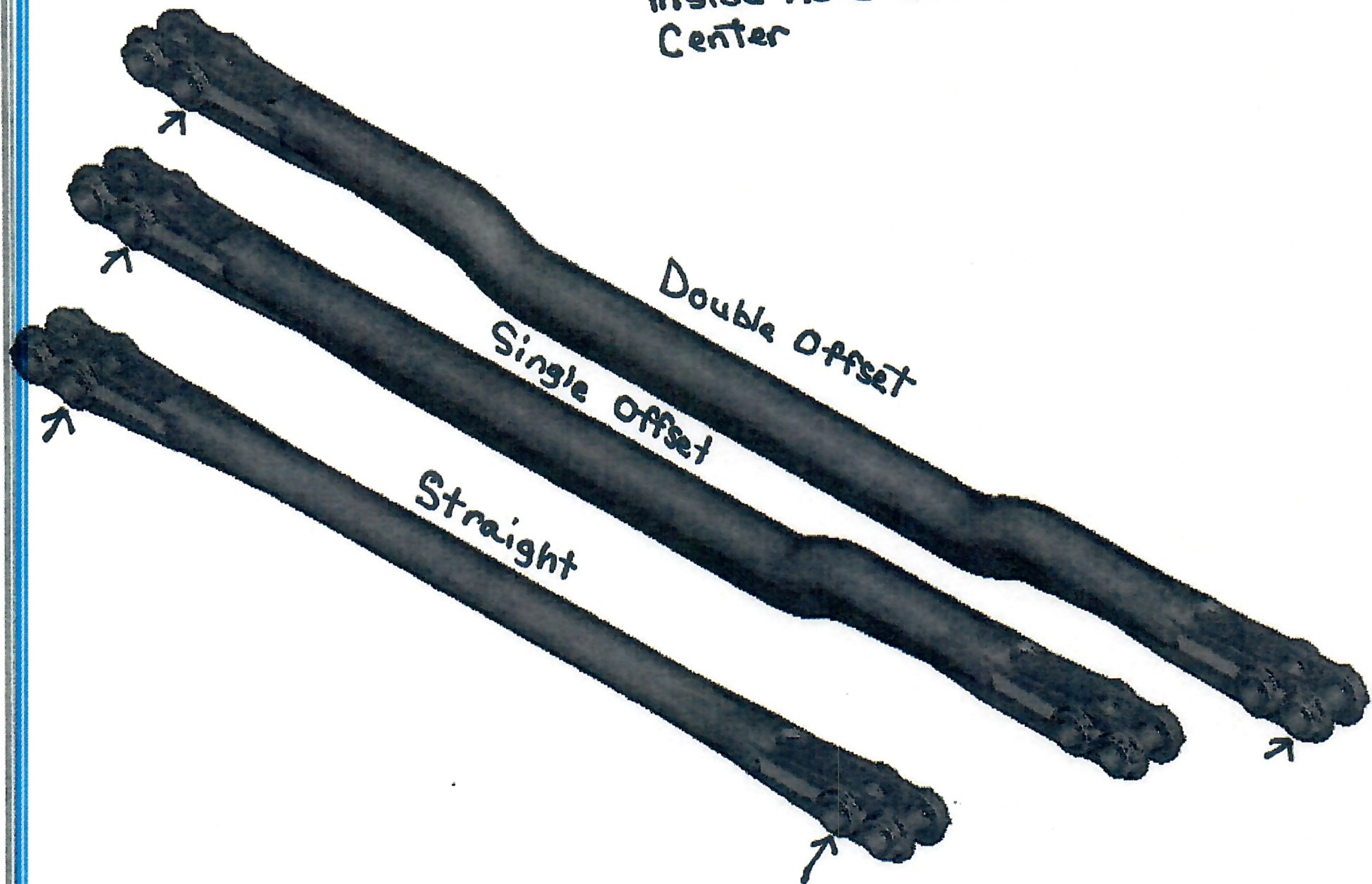
K

D

SCHAEFER TRUCK LEVER CONNECTIONS

(Bottom Rods)

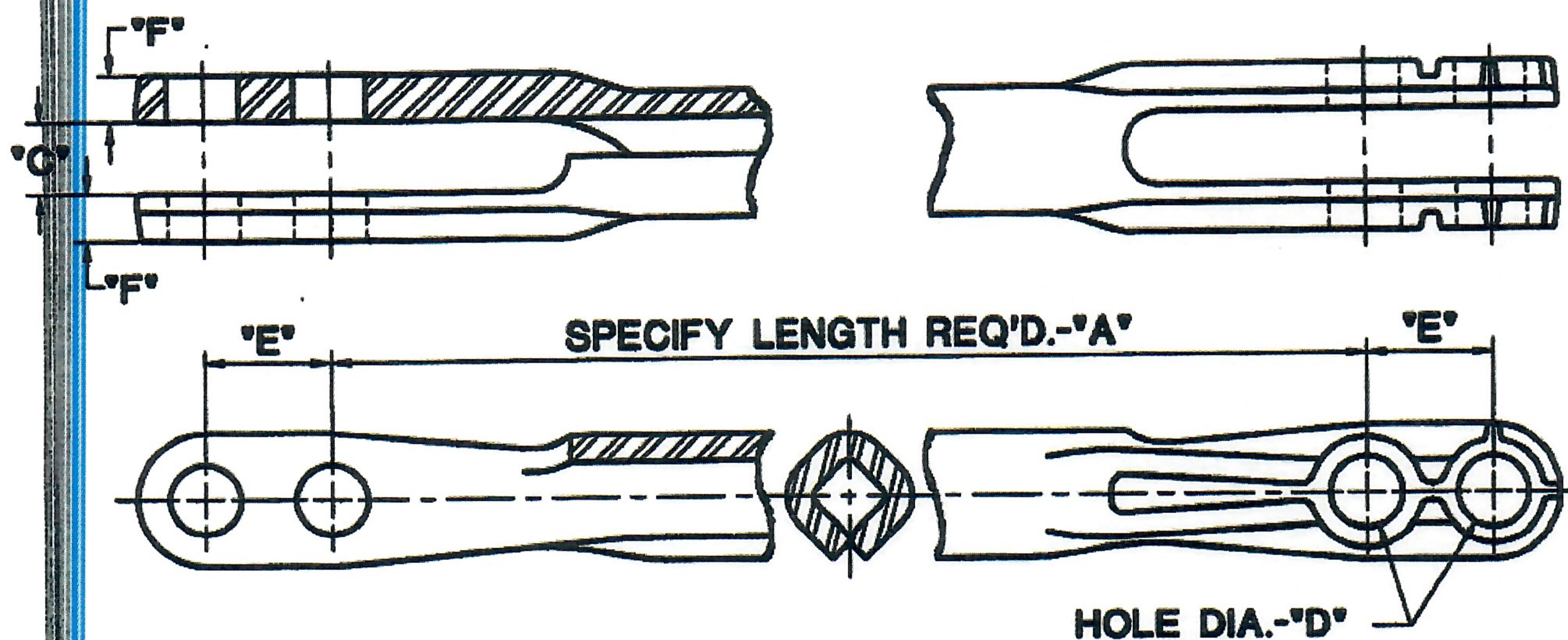
Correct way to measure
inside hole center to
center



The unique hollow-forged design of Schaefer Truck Lever Connections provides greater compressive strength and eliminates all unnecessary weight. Decreased weight reduces wear and increases brake beam life.

Schaefer Truck Lever Connections are forged from A.I.S.I. C-1040 special bar quality steel and have been designed for specific load requirements.

SCHAEFER STRAIGHT TRUCK LEVER CONNECTIONS



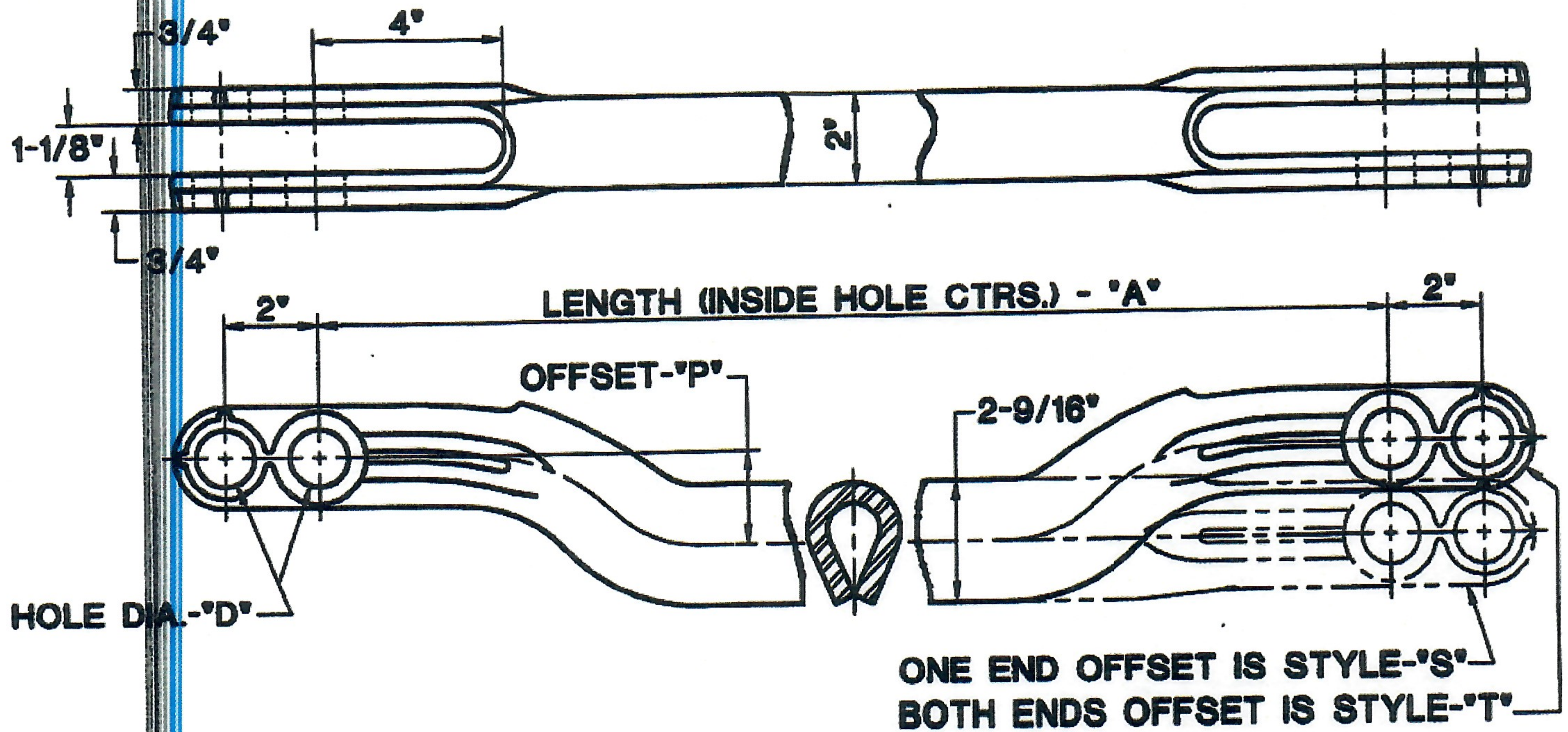
MATERIAL: STEEL, A.I.S.I. NO. 1040/1045

DWG. NO.	LENGTH "A"(IN.)	SPACE "C"(IN.)	HOLE DIA. "D"(IN.)	"E"(IN.)	"F"(IN.)
1201	34-44	1-1/8	1-1/8	2	3/4
1202	34-40	1-1/8	1-1/4	2	3/4
1203	34-40	1-1/8	1-3/8	2	3/4
* 1204	35-39	1-1/8	1-1/2	2-1/8	7/8

LENGTHS, OTHER THAN SHOWN, AVAILABLE UPON REQUEST

*** DWG. NO. 1204 IS NOT AVAILABLE AS A ONE-PIECE FORGED TRUCK LEVER CONNECTION, SEE DWG. NOS. 3588 AND 3589 ALTERNATE TUBULAR TRUCK LEVER CONNECTIONS**

SCHAEFER OFFSET TRUCK LEVER CONNECTIONS



MATERIAL: STEEL, A.I.S.I. NO. 1040/1045

DWG. NO.	LENGTH 'A'(IN.)	HOLE DIA. 'D'(IN.)	OFFSET 'P'(IN.)	OFFSET STYLE
* 8206	35	1-1/8	1-21/32	T
3377	36	1-1/8	1-21/32	T
3334	37	1-1/8	1-21/32	T
3388	38	1-1/8	1-21/32	T
* 8225	35-1/2	1-1/8	1	S
3493	36	1-1/8	1	S
3580	36	1-1/4	1	S
3066	37	1-1/4	1	S
3526	38	1-1/4	1	S
3689	36	1-1/4	2	S
3623	37	1-1/8	1	S

LENGTHS, OTHER THAN SHOWN, AVAILABLE UPON REQUEST

* AVAILABLE AS CUT-DOWN AND REINFORCED OFFSET TRUCK LEVER CONNECTIONS ONLY